

SEAL BAND | SEAL SQUARE

SINGLE-SIDED TAPE FOR INDOOR USE



EFFECTIVE

The pre-shapeable carrier allows efficient sealing of concave or convex corners and edges.

SQUARE VERSION

Ideal for small point seals or holes for the blowing technique, where precision is required.

COMPOSITION

support
paper reinforced with protective film

glue
acrylic dispersion without solvents

release liner
silicone coated paper



TECHNICAL DATA

Properties	standard	value	USC conversion
Total thickness	EN 1942	0,33 mm	13 mil
Adhesiveness	EN 1939	35 N/25 mm	8 lbf/in
Water vapour transmission (Sd)	EN ISO 12572	6 m	0.58 US perm
Temperature resistance	-	-40 / +100 °C	-40 / +212 °F
Application temperature	-	-10 / +40 °C	+14 / +104 °F
Storage temperature ⁽¹⁾	-	+15 / +25 °C	+59 / +77 °F
VOC emissions	EN 16516	< 5 µg/m ³	-
French VOC classification	ISO 16000	A+	-
Ecode	GEV test procedure	EC1 plus	-

⁽¹⁾Store the product in a dry, covered location.
Waste classification (2014/955/EU): 08 04 10.

CODES AND DIMENSIONS

SEAL BAND

CODE	liner	B	L	liner	B	L	
	[mm]	[mm]	[m]	[in]	[in]	[ft]	
SEAL60	60	60	25	2.4	2.4	82	10
SEAL1248	12 / 48	60	25	0.5 / 1.9	2.4	82	10
SEAL3030	30 / 30	60	25	1.2 / 1.2	2.4	82	10

SEAL SQUARE

CODE	B	H	L	B	H	L	pcs/roll	
	[mm]	[mm]	[m]	[in]	[in]	[ft]		
SEAL180	180	180	36	7.1	7.1	118	200	1

■ FIELDS OF APPLICATION



■ PRODUCT RANGE



SEAL60



SEAL1248



SEAL3030



SEAL180



FAST INSTALLATION

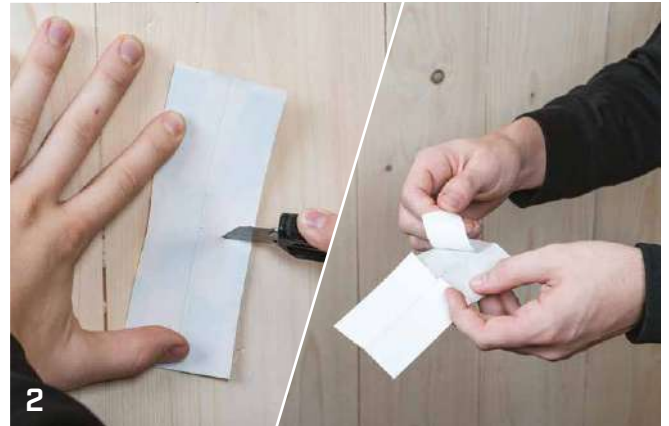
Versions with pre-cut liner are available for quick and easy installation.

SECURE

Reinforced paper support, ideal for indoor use; airtightness guaranteed over time.

RECOMMENDATIONS FOR INSTALLATION

CORNER DETAIL



2 MARLIN, CUTTER

4 ROLLER

BEAM SEAL DETAIL



1 MARLIN, CUTTER

3 ROLLER

WINDOW HOLE SEALING DETAIL



1 MARLIN, CUTTER

4 ROLLER